

# Insul8r

Issue 1 | Look out for Insul8r Issue 2 in January 2012

The latest Isover news in 8 pages

---

NEW Single Product Solution

---

No-Foil Isover RD35

---

NEW External Timber Frame Wall Solution

---

NEW HVAC Installation Manuals

---

*CLIMAVER*® Training Course

---

Coming Soon: NEW RIBA Accredited CPDs


---


# NEW Single Product Solution



## Round The House Roll

Isover's Round The House Roll is the new single product solution that meets and exceeds thermal and acoustic regulations in external and separating masonry cavity walls.

- Just one product required on-site for insulating external and separating masonry cavity walls. 
- Removes the need for Pre-Completion Testing and parge coating (prior to drylining) when used in E-WM-17 and E-WM-20 Robust Detail constructions.
- Eliminates the Party Wall Thermal Bypass effect by providing a fully-filled cavity and effective edge sealing.

- Achieves up to 4 credits towards the Code for Sustainable Homes with airborne sound insulation that's 8dB higher than building regulations. 
- BBA approved for use in external walls, removing the requirement for retaining discs and cavity barriers whilst providing excellent acoustic performance.
- The roll format reduces the potential for cold bridging and acoustic weak spots as it uses fewer vertical joints.

*To find out more, visit:*  
[www.isover.co.uk/notjustfortoday](http://www.isover.co.uk/notjustfortoday)

# No-Foil Isover RD35

At Isover, we're always looking for ways to improve our product performance. Our latest development has led us to replace the foil facing used to identify our Isover RD35 party wall product, with inkjet printing.



This simple change improves the product's fire rating from Euroclass A2 to A1 and allows us to fit 33% more into each pack. Also, with this change there is no effect on either acoustic performance of the accredited Robust Detail construction or the Robust Detail registration process.



Updated product details for Isover RD35:

Product	Order code	Batts per pack	Pack area (m <sup>2</sup> )	Packs per pallet	Pallet area (m <sup>2</sup> )
Isover RD35	5200571288	16	8.74	15	131.00

For further information, please free phone our **Customer Service Centre** on **0800 032 2555**.

## Win an iPod Touch

***Sign a friend up to our mailing list and you'll be automatically entered into a draw for an iPod Touch\*. For your chance to win, email us at [isover@saint-gobain.com](mailto:isover@saint-gobain.com) with your friends name, contact details and a telephone number to contact you if you're the lucky winner.***

\*Only one draw entry per person. Closing date: 31st October 2011





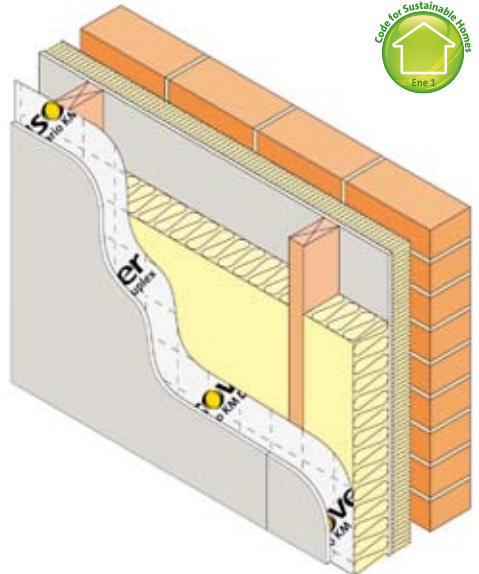
# NEW External Timber Frame Wall Solution

Meet Level 6 for energy on the Code for Sustainable Homes and achieve even greater thermal comfort with Isover's External Timber Frame Wall Solution.

Using NEW products, Isover Timber Frame Batt 32 140mm and Isover Frame Façade Slab, the solution provides exceptional energy efficiency and living comfort. The inclusion of Isover Vario air-tightness membrane can also help to reduce heat loss through the building envelope to a tenth of that of a conventional house.

This makes it ideal for use in Passivhaus constructions and buildings with Mechanical Ventilation Heat Recovery systems.

A zero carbon solution 'Not just for today' with an overall construction U-value of 0.14 W/m<sup>2</sup>K.



To find out more, visit:  
[www.isover.co.uk/notjustfortoday](http://www.isover.co.uk/notjustfortoday)

# NEW HVAC Installation Manuals

## Isover Launch NEW Installation Manuals for HVAC Insulation;

Isover's NEW Installation Manual for 'Installing Pipework and Ductwork' has been developed with TICA and their training academy IETA to provide a guidance document designed to promote best practice in line with British Standards.

Isover's 'Installing Fire Protection Insulation of Metal Ductwork' manual, for the innovative ULTIMATE™ Protect product range, has been updated to include solutions for two and three-sided ducts, access panels and Kitchen Extract solutions, for up to two hours fire protection.

These installation manuals highlight how Isover's HVAC product range of Pipe Sections; Duct Wraps and Slabs; and Fire protection products

offer considerable installation advantages to contactors, including:

- Lightweight flexible solutions.
- Consistent product quality.
- Compressive resistance - minimising waste on site and allowing more efficient installation.

The documents also offer guidance on relevant Building Regulations, assist with product selection, provide advice on storage and give step-by-step installation directions (with picture references).

For your manual, please contact us on:

**Tel:** 0115 969 8010

**Email:** [Isover@saint-gobain.com](mailto:Isover@saint-gobain.com)



# CLIMAVER® Training Course

Isover's pre-insulated ductwork system *CLIMAVER*® offers excellent thermal and acoustic performance, in a fire-safe solution, that's more economical and efficient than conventional 'sheet metal and insulation' ductwork. With no need for secondary lagging, *CLIMAVER*® is also up to 4.5 times lighter than traditional solutions.

Isover offers a 1.5 day training course which teaches the basic principles of constructing common ductwork configurations using the *CLIMAVER*® system. The course also provides training on fabricating straight ducts, elbows, trousers and reducers with precision cut joints, allowing fast fabrication and installation with less wastage.

Upon successful completion, attendees will become approved *CLIMAVER*® installers. This status will ensure the recommendation of your company to Consulting Engineers and other relevant parties by our team of Isover Specification Managers.

For more information on the *CLIMAVER*® practical training course available through Saint-Gobain's Technical Academies, please contact us on:

**Tel:** 0115 969 8010

**Email:** [Techinsulation@saint-gobain.com](mailto:Techinsulation@saint-gobain.com)





# Coming Soon: NEW RIBA Accredited CPDs

From November onwards, the RIBA accredited CPD with guidance on achieving Code levels using different constructions, will be ready for booking with your local Area Specification Manager.

This CPD focuses on Climate Change Issues and how Passivhaus principles can be adopted to achieve different levels of the Code for Sustainable Homes.

From 1 December, the second RIBA accredited CPD, looking at the Code for Sustainable Homes and

achieving credits in detail, will become available.

For further information or to advance book your CPD seminar at a place convenient to you, please contact us on:

**Tel:** 0115 969 8010

**Email:** [Isover@saint-gobain.com](mailto:Isover@saint-gobain.com)

## Are You Following Isover?

You can now stay up-to-date with what we're up to wherever you are:



Follow us on Twitter to keep up-to-date with all of the exciting developments, from new products and solutions to how we're exceeding current building regulation requirements from a thermal, acoustic and fire-safe performance perspective.



If you're a student, you should check us out on Facebook for updates on the Isover Architectural Design Competition. This annual event recognises outstanding architectural design using the criteria of the Isover Multi-Comfort House concept.



Just visit [www.isoover.co.uk](http://www.isoover.co.uk) and follow the links on our homepage.



[www.isover.co.uk](http://www.isover.co.uk)

**Isover order placement or order enquiries:**

Tel: 0800 032 2555

Fax: 0800 917 9188

**Buildings Insulation - Technical Enquiries**

Tel: 0115 945 1143

Email: [isover.enquiries@saint-gobain.com](mailto:isover.enquiries@saint-gobain.com)

**Technical Insulation - Technical Enquiries**

Tel: 01928 796 180

Email: [techinsulation@saint-gobain.com](mailto:techinsulation@saint-gobain.com)

**Isover**

UK Commercial Centre

Gotham Business Park

Leake Road, Gotham

Nottinghamshire

NG11 0LB

Tel: 0115 969 8010

Fax: 0115 983 1675

Email: [isover@saint-gobain.com](mailto:isover@saint-gobain.com)

Publish date: August 2011

Isover Document Reference: IN5001

Isover reserves the right to revise product specifications without notice. The information in this document was correct to the best of our knowledge at the time of publication. It is the users responsibility to ensure that it remains current prior to use. The information in this document is for guidance only and should not be read in isolation. Users should read and familiarise themselves with all the information contained in this document and ensure that they are fully conversant with the products and systems being used, before subsequent specification or installation. For a comprehensive and up to date library of information visit the Isover website.