

Saint-Gobain Isover UK Limited

Saint-Gobain House
East Leake
Loughborough
Leicestershire, LE12 6JU

Tel: 01159 698 302

e-mail: isover.technical@saint-gobain.com

website: www.isover.co.uk



Agrément Certificate

19/5672

Product Sheet 2 Issue 2

ISOVER POLTERM MAX PLUS

ISOVER POLTERM MAX PLUS FOR USE IN TIMBER OR STEEL FRAME CONSTRUCTIONS

This Agrément Certificate Product Sheet⁽¹⁾ relates to Isover Polterm Max Plus for use in Timber or Steel Frame Constructions, a mineral wool insulation slab for use as partial fill insulation on new and existing conventional timber- or steel-frame walls, in domestic and non-domestic buildings without height restriction, with a masonry outer leaf.

(1) Hereinafter referred to as 'Certificate'.

The assessment includes

Product factors:

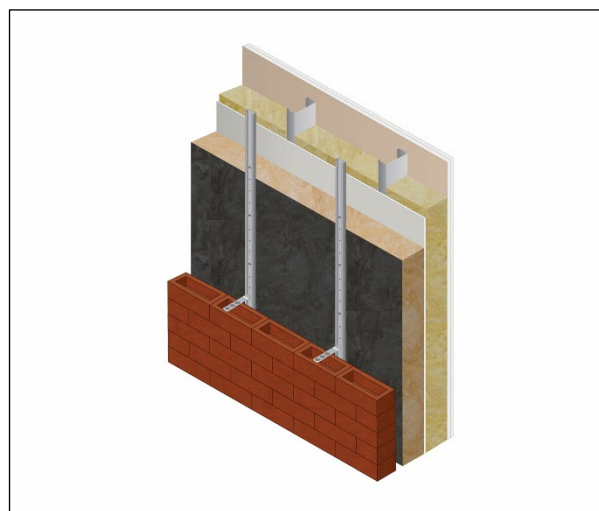
- compliance with Building Regulations
- compliance with additional regulatory or non-regulatory information where applicable
- evaluation against technical specifications
- assessment criteria and technical investigations
- uses and design considerations

Process factors:

- compliance with Scheme requirements
- installation, delivery, handling and storage
- production and quality controls
- maintenance and repair

Ongoing contractual Scheme elements†:

- regular assessment of production
- formal 3-yearly review



KEY FACTORS ASSESSED

- Section 1. Mechanical resistance and stability
- Section 2. Safety in case of fire
- Section 3. Hygiene, health and the environment
- Section 4. Safety and accessibility in use
- Section 5. Protection against noise
- Section 6. Energy economy and heat retention
- Section 7. Sustainable use of natural resources
- Section 8. Durability

The BBA has awarded this Certificate to the company named above for the product described herein. This product has been assessed by the BBA as being fit for its intended use provided it is installed, used and maintained as set out in this Certificate.

On behalf of the British Board of Agrément

Date of Second issue: 4 August 2025

Date of First issue: 24 June 2019

Hardy Giesler
Chief Executive Officer

This BBA Agrément Certificate is issued under the BBA's Inspection Body accreditation to ISO/IEC 17020. Sections marked with † are not issued under accreditation.

The BBA is a UKAS accredited Inspection Body (No. 4345), Certification Body (No. 0113) and Testing Laboratory (No. 0357).

Readers MUST check that this is the latest issue of this Agrément Certificate by either referring to the BBA website or contacting the BBA directly.

The Certificate should be read in full as it may be misleading to read clauses in isolation.

Any photographs are for illustrative purposes only, do not constitute advice and should not be relied upon.

British Board of Agrément

1st Floor, Building 3, Hatters Lane
Croxley Park, Watford
Herts WD18 8YG

©2025

tel: 01923 665300
clientservices@bbacerts.co.uk
www.bbacerts.co.uk

SUMMARY OF ASSESSMENT AND COMPLIANCE

This section provides a summary of the assessment conclusions; readers should refer to the later sections of this Certificate for information about the assessments carried out.

Compliance with Regulations

Having assessed the key factors, the opinion of the BBA is that Isover Polterm Max Plus for use in Timber or Steel Frame Constructions, if installed, used and maintained in accordance with this Certificate, can satisfy or contribute to satisfying the relevant requirements of the following Building Regulations:



The Building Regulations 2010 (England and Wales) (as amended)

Requirement:	B3(4)	Internal fire spread (structure)
Comment:		The product can contribute to satisfying this Requirement. See section 2 of this Certificate.
Requirement:	B4(1)	External fire spread
Comment:		The product is unrestricted by this Requirement. See section 2 of this Certificate.
Requirement:	C2(a)	Resistance to moisture
Comment:		The product can contribute to satisfying this Requirement. See section 3 of this Certificate.
Requirement:	C2(b)	Resistance to moisture
Comment:		The product can contribute to satisfying this Requirement. See section 3 of this Certificate.
Requirement:	C2(c)	Resistance to moisture
Comment:		The product can contribute to satisfying this Requirement. See section 3 of this Certificate.
Regulation:	L1(a)(i)	Conservation of fuel and power
Comment:		The product can contribute to satisfying this Regulation; however, compensating fabric measures may be required. See section 6 of this Certificate.
Regulation:	7(1)	Materials and workmanship
Comment:		The product is acceptable. See sections 8 and 9 of this Certificate.
Regulation:	7(2)	Materials and workmanship
Comment:		The product is unrestricted by this Regulation. See section 2 of this Certificate.
Regulation:	25B	Nearly zero-energy requirements for new buildings
Regulation:	26	CO2 emission rates for new buildings
Regulation:	26A	Fabric energy efficiency rates for new dwellings (applicable to England only)
Regulation:	26A	Primary energy rates for new buildings (applicable to Wales only)
Regulation:	26B	Fabric performance values for new dwellings (applicable to Wales only)
Regulation:	26C	Target primary energy rates for new buildings (applicable to England only)
Regulation:	26C	Energy efficiency rating (applicable to Wales only)
Comment:		The product can contribute to satisfying these Regulations; however, compensating fabric/services measures may be required. See section 6 of this Certificate.



The Building (Scotland) Regulations 2004 (as amended)

Regulation:	8(1)	Fitness and durability of materials and workmanship
Comment:		The product is acceptable. See sections 8 and 9 of this Certificate.

Regulation:	8(3)	Fitness and durability of materials and workmanship
Comment:		The product is unrestricted by this Regulation. See section 2 of this Certificate.
Regulation:	9	Building standards – construction
Standard:	2.4	Cavities
Comment:		The product is unrestricted by this Standard, with reference to clauses 2.4.2 ⁽¹⁾⁽²⁾ , 2.4.4 ⁽¹⁾ and 2.4.6 ⁽²⁾ . See section 2 of this Certificate.
Standard:	2.6	Spread to neighbouring buildings
Comment:		The product is unrestricted by this Standard, with reference to clauses 2.4.4 ⁽¹⁾ , 2.4.6 ⁽²⁾ , 2.6.5 ⁽¹⁾ and 2.6.6 ⁽²⁾ . See section 2 of this Certificate.
Standard:	3.4	Moisture from the ground
Comment:		The product can contribute to satisfying this Standard, with reference to clauses 3.4.1 ⁽¹⁾⁽²⁾ and 3.4.5 ⁽¹⁾⁽²⁾ . See section 3 of this Certificate.
Standard:	3.10	Precipitation
Comment:		The product can contribute to satisfying this Standard, with reference to clauses 3.10.1 ⁽¹⁾⁽²⁾ and 3.10.3 ⁽¹⁾⁽²⁾ . See section 9 of this Certificate.
Standard:	3.15	Condensation
Comment:		The product can contribute to satisfying this Standard, with reference to clauses 3.15.1 ⁽¹⁾⁽²⁾ , 3.15.4 ⁽¹⁾⁽²⁾ and 3.15.5 ⁽¹⁾⁽²⁾ . See section 3 of this Certificate.
Standard:	6.1(b)(c)(d)	Energy demand and carbon dioxide emissions
Comment:		The product can contribute to satisfying this Standard, with reference to clauses 6.1.1 ⁽¹⁾ and 6.1.2 ⁽²⁾ . See section 6 of this Certificate.
Standard:	6.2	Building insulation envelope
Comment:		The product can contribute to satisfying this Standard, with reference to clauses 6.2.1 ⁽¹⁾⁽²⁾ , 6.2.3 ⁽¹⁾ , 6.2.4 ⁽²⁾ , 6.2.8 ⁽¹⁾ , 6.2.9 ⁽²⁾ and 6.2.12 ⁽¹⁾ . See section 6 of this Certificate.
Standard:	7.1(a)(b)	Statement of sustainability
Comment:		The product can contribute to satisfying the relevant requirements of Regulation 9, Standards 1 to 6, and therefore will contribute to a construction meeting a bronze level of sustainability as defined in this Standard. In addition, the product can contribute to a construction meeting a higher level of sustainability as defined in this Standard, with reference to clauses 7.1.2 ⁽¹⁾ , 7.1.3 ⁽²⁾ , 7.1.4 ⁽¹⁾ , 7.1.6 ⁽¹⁾⁽²⁾ , 7.1.7 ⁽¹⁾ , 7.1.8 ⁽²⁾ , 7.1.9 ⁽²⁾ and 7.1.10 ⁽²⁾ .
Regulation:	12	Building standards – conversion
Comment:		Comments in relation to the product under Regulation 9, Standards 1 to 6, also apply to this Regulation, with reference to clause 0.12.1 ⁽¹⁾⁽²⁾ and Schedule 6 ⁽¹⁾⁽²⁾ .
		(1) Technical Handbook (Domestic). (2) Technical Handbook (Non-Domestic).



The Building Regulations (Northern Ireland) 2012 (as amended)

Regulation:	23(1)(a)(i)	Fitness of materials and workmanship
Comment:	(iii)(b)(i)(ii)	The product is acceptable. See sections 8 and 9 of this Certificate.
Regulation:	23(2)	Fitness of materials and workmanship
Comment:		The product is unrestricted by this Regulation. See section 2 of this Certificate.
Regulation:	28(b)	Resistance to moisture and weather
Comment:		The product can contribute to satisfying this Regulation. See section 9 of this Certificate.

Regulation:	29	Condensation
Comment:		The product can contribute to satisfying this Regulation. See section 3 of this Certificate.
Regulation:	35(4)	Internal fire spread – structure
Comment:		The product can contribute to satisfying this Regulation. See section 2 of this Certificate.
Regulation:	36(a)	External fire spread
Comment:		The product is unrestricted by this Regulation. See section 2 of this Certificate.
Regulation:	39(a)(i)	Conservation measures
Comment:		The product can contribute to satisfying this Regulation. See section 6 of this Certificate.
Regulation:	40(2)	Target carbon dioxide emission rate
Regulation:	43(1)(2)	Renovation of thermal elements
Regulation:	43B	Nearly zero-energy requirements for new buildings
Comment:		The product can contribute to satisfying these Regulations. See section 6 of this Certificate.

Additional Information

NHBC Standards 2025

In the opinion of the BBA, Isover Polterm Max Plus for use in Timber or Steel Frame Constructions, if installed, used and maintained in accordance with this Certificate, can satisfy or contribute to satisfying the relevant requirements in relation to *NHBC Standards*, Chapters 6.2 *External timber framed walls* and 6.10 *Light steel framed walls and floors*.

The opinion of the BBA does not amount to any endorsement or approval by NHBC and does not in any way guarantee that NHBC will approve such product / system as compliant with the NHBC Technical Requirements and Standards.

Fulfilment of Requirements

The BBA has judged Isover Polterm Max Plus for use in Timber or Steel Frame Constructions to be satisfactory for use as described in this Certificate. The product has been assessed as a mineral wool partial fill insulation for use as thermal insulation on new and existing conventional timber- or steel-frame walls, in domestic and non-domestic buildings with a masonry outer leaf, without height restriction.

ASSESSMENT

Product description and intended use

The Certificate holder provided the following description for the product under assessment. Isover Polterm Max Plus for use in Timber or Steel Frame Constructions comprises slabs of rigid stone mineral wool (MW) treated with a water-repellent additive with a black glass tissue facer on one face.

The product has the nominal characteristics given in Table 1.

Table 1 Nominal characteristics

Length (mm)	1200
Width (mm)	600
Thickness (mm) ⁽¹⁾	50, 60, 75, 90, 100, 120, 125, 150, 160, 180, 200
Edge profile	Square

(1) Other slab thicknesses within the above range are available on request.

Ancillary items

The Certificate holder recommends the following ancillary items for use with the product, but these materials have not been assessed by the BBA and are outside the scope of this Certificate:

- insulation fasteners/fixings
- sheathing and lining board
- breather membranes
- air and vapour control layer (AVCL).

Product assessment – key factors

The product was assessed for the following key factors, and the outcome of the assessments is shown below. Conclusions relating to the Building Regulations apply to the whole of the UK unless otherwise stated.

1 Mechanical resistance and stability

Not applicable.

2 Safety in case of fire

Data were assessed for the following characteristics.

2.1 Reaction to fire

2.1.1 The product was tested for reaction to fire and the classification is given in Table 2.

Table 2 Reaction to fire classification

Product assessed	Assessment method	Requirement	Result ⁽¹⁾
Isover Polterm Max Plus	BS EN 13501-1 : 2007	Value achieved	A1

(1) Classification report no WF 401343 (Issue no 2, 25/07/2018), issued by Exova Warringtonfire, available from the Certificate holder.

2.1.2 On the basis of data assessed, the product is not subject to any restrictions on building height or proximity to a relevant boundary by the documents supporting the national Building Regulations.

2.1.3 Designers must refer to the relevant national Building Regulation and guidance for detailed conditions of use, particularly in respect of requirements for substrate fire performance, cavity barriers/closers, fire stopping of service penetrations and combustibility limitations for other materials and components used in the overall wall construction.

3 Hygiene, health and the environment

Data were assessed for the following characteristics.

3.1 Effectiveness against rising damp

3.1.1 The product was tested for short term water absorption by partial immersion and the results are given in Table 3.

Table 3 Short term water absorption by partial immersion

Product assessed	Assessment method	Requirement	Result
Isover Polterm Max Plus	BS EN 1609 : 2013	$\leq 1.0 \text{ kgm}^{-2}$	Pass

3.1.2 On the basis of data assessed, the product may be used in situations where it bridges the damp proof course (DPC) in walls; dampness from the ground will not pass through to the inner leaf providing the wall is detailed in accordance with the requirements and provisions of the national Building Regulations.

3.2 Water vapour permeability

3.2.1 The product was tested for water vapour permeability and the results are given in Table 4.

Table 4 Water vapour resistance

Material	Assessment method	Requirement	Result
Isover Polterm Max Plus	BS EN ISO 10456 : 2007	Declared value	5 MN·s·g ⁻¹

3.2.2 An AVCL must be used should the condensation risk analysis show that this is necessary.

4 Safety and accessibility in use

Not applicable.

5 Protection against noise

Not applicable.

6 Energy economy and heat retention

Data were assessed for the following characteristics.

6.1 Thermal conductivity

The product was tested for thermal conductivity and the results are given in Table 5.

Table 5 Thermal conductivity

Product assessed	Assessment method	Requirement	Result
Isover Polterm Max Plus	BS EN 12667 : 2001 and BS EN 13162 : 2012	Declared value (λ_D)	0.035 W·m ⁻¹ ·K ⁻¹

6.2 Thermal performance

6.2.1 The U value of completed wall construction will depend on the insulation thickness, number and type of fixings, the insulating value of the substrate and its internal finish. Example U values are given in Tables 6 and 7.

Table 6 Example U values — timber frame⁽¹⁾⁽²⁾

U value (W·m ⁻² ·K ⁻¹)	Isover Polterm Max Plus thickness (clear 140 mm timber frame) (mm) ⁽³⁾	Isover Polterm Max Plus thickness (fully filled 140 mm timber frame) (mm) ⁽⁴⁾
0.13	240 ⁽⁵⁾	150
0.15	200	100
0.17	180	75
0.18	180	75
0.21	150	50
0.26	120	50
0.28	100	0 ⁽⁶⁾
0.30	100	0 ⁽⁶⁾

(1) Construction, external to internal: 102.5 mm brick ($\lambda = 0.77 \text{ W}\cdot\text{m}^{-1}\cdot\text{K}^{-1}$), 50 mm clear cavity, Isover Polterm Max Plus , breather membrane, 9 mm OSB (oriented strand board) sheathing board ($\lambda = 0.13 \text{ W}\cdot\text{m}^{-1}\cdot\text{K}^{-1}$), 140 mm timber frame (15% fraction), AVCL and 15 mm plasterboard ($\lambda = 0.25 \text{ W}\cdot\text{m}^{-1}\cdot\text{K}^{-1}$).

(2) Calculations based upon 4.4 stainless steel cavity wall ties per m² (6.6 mm² cross-sectional area, $\lambda = 17 \text{ W}\cdot\text{m}^{-1}\cdot\text{K}^{-1}$).

(3) Insulation installed against the sheathing board with no insulation in the timber frame.

(4) Insulation installed against the sheathing board with 140 mm of insulation in the timber frame ($\lambda = 0.035 \text{ W}\cdot\text{m}^{-1}\cdot\text{K}^{-1}$) with a 15% timber frame fraction.

(5) Double layering

(6) Achieves the U value without Isover Polterm Max Plus insulation.

Table 7 Example U values — steel frame⁽¹⁾⁽²⁾

U value (W·m ⁻² ·K ⁻¹)	Isover Polterm Max Plus thickness (clear 90 mm steel frame) (mm) ⁽³⁾	Isover Polterm Max Plus thickness (fully filled 90 mm steel frame) (mm) ⁽⁴⁾
0.13	240 ⁽⁵⁾	180
0.15	200	150
0.17	180	120
0.18	180	120
0.21	150	80
0.26	120	50
0.28	100	50
0.30	100	50

(1) Construction, external to internal: 102.5 mm brick ($\lambda = 0.77 \text{ W}\cdot\text{m}^{-1}\cdot\text{K}^{-1}$), 50 mm clear cavity, Isover Polterm Max Plus, breather membrane, 9 mm OSB sheathing board ($\lambda = 0.13 \text{ W}\cdot\text{m}^{-1}\cdot\text{K}^{-1}$), 90 mm light steel frame (0.2% fraction), AVCL and 15 mm plasterboard ($\lambda = 0.25 \text{ W}\cdot\text{m}^{-1}\cdot\text{K}^{-1}$).

(2) Calculations based upon 4.4 stainless steel cavity wall ties per m² (6.6 mm² cross-sectional area, $\lambda = 17 \text{ W}\cdot\text{m}^{-1}\cdot\text{K}^{-1}$).

(3) Insulation installed against the sheathing board with no insulation in the steel frame.

(4) Insulation installed against the sheathing board with 90 mm of insulation in the steel frame ($\lambda = 0.038 \text{ W}\cdot\text{m}^{-1}\cdot\text{K}^{-1}$) with a 0.2% steel frame fraction.

(5) Double layering.

6.2.2 On the basis of data assessed, the product can contribute towards a construction satisfying the national Building Regulations in respect of energy economy and heat retention.

7 Sustainable use of natural resources

Not applicable.

8 Durability

8.1 The potential mechanisms for degradation and the known performance characteristics of the materials in this product were assessed.

8.2 The product was tested for dimensional stability and the result is given in Table 8.

Table 8 Dimensional stability

Product assessed	Assessment method	Requirement	Result
Isover Polterm Max Plus	Dimensional stability to BS EN 1604 : 1996 (70°C and 90% RH for 48 hours)	Length, width and thickness $\leq 1\%$ change	Pass

8.3 Service life

Under normal service conditions, the product will have a life equivalent to the structure in which it is incorporated, provided it is designed, installed and maintained in accordance with this Certificate and the Certificate holder's instructions.

PROCESS ASSESSMENT

Information provided by the Certificate holder was assessed for the following factors:

9 Design, installation, workmanship and maintenance

9.1 Design

9.1.1 The design process was assessed, and the following requirements apply in order to satisfy the performance assessed in this Certificate.

9.1.2 The wall and sub-frame must be structurally sound, and have been designed and constructed in accordance with the relevant recommendations of:

- BS 5250 : 2021
- BS EN 845-1 : 2013
- BS 8000-3 : 2020
- BS EN 1993-1-2 : 2005 and its UK National Annex
- BS EN 1996-1-1 : 2005 and its UK National Annex
- BS EN 1996-1-2 : 2005 and its UK National Annex
- BS EN 1996-2 : 2006 and its UK National Annex
- BS EN 1996-3 : 2006 and its UK National Annex.

9.1.3 It is essential that such walls are designed and constructed to incorporate the normal precautions against moisture ingress, including the use of a breather membrane over the timber sheathing in framing board applications.

9.1.4 As with other forms of cavity wall insulation, where buildings need to comply with *NHBC Standards 2025*, specifiers must observe the requirements of that document.

9.1.5 Cavity wall ties with insulation-retaining fixings and, if required, any additional ties to BS EN 845-1 : 2013 must be used for structural stability in accordance with BS EN 1996-1-1 : 2005, BS EN 1996-2 : 2006 and BS EN 1996-3 : 2006, and their UK National Annexes.

9.1.6 Care must be taken in the overall design and construction of walls incorporating the product to ensure the provision of appropriate:

- cavity trays and DPCs
- cavity barriers and fire dampers
- resistance to the ingress of precipitation, moisture and dangerous gases from the ground
- resistance to sound transmission when flanking separating walls and floors.

Buildings up to and including 25 metres high

9.1.7 The residual cavity width to be maintained during construction is 50 mm. This may reduce to 25 mm in isolated areas due to individual construction features (a minimum of 50 mm residual cavity width is required by the NHBC). This may be achieved by designing a cavity width which takes into account the dimensional tolerances of the components which make up the wall (by reference to the British Standards relating to the bricks, blocks and slabs), or by using the data from the respective manufacturers. Allowances may need to be made for the quality of building operatives and the degree of site supervision or control available, and for the limitations in respect of exposure of the proposed building (as set out in Table 9).

Table 9 Maximum allowable total exposure factors of different constructions

Construction	Maximum allowable exposure factor E ⁽¹⁾
All external masonry walls protected by: rendering (to BS EN 13914-1 : 2016), tile/slate hanging, or timber, plastic or metal weatherboarding or cladding.	No restriction
One or more external masonry walls constructed from facing clay brickwork or natural stone (the porosity of which exceeds 20% by volume). Mortar joints must be flush-pointed or weatherstruck.	100
One or more external masonry walls constructed from calcium silicate bricks, concrete blocks, reconstituted stone, or natural stone (the porosity of which is less than 20% by volume), or any material with raked mortar joints.	88

(1) To BS 5618 : 1985.

9.1.8 From ground level, the maximum height of continuous cavity walls must not exceed 12 metres; above 12 metres, the maximum height of continuous cavity walls must not exceed 7 metres. In both cases, breaks should be in the form of continuous horizontal cavity trays and weepholes discharging to the outside.

9.1.9 An external render coat or other suitable finish should be applied in locations where such application would be normal practice; care should be taken to ensure that the residual cavity is not bridged by mortar.

Buildings over 25 metres in height

9.1.10 The width of the residual clear cavity to be achieved is a minimum of 50 mm, and the following additional requirements apply:

- the specifier must take extra care when detailing to ensure that the introduction of the insulation does not affect the weather resistance of the wall. Above average site supervision is recommended during the installation of the product
- where, for structural reasons, the cavity width is reduced (eg by the intrusion of ring beams), a minimum residual cavity width of 25 mm must be maintained, and extra care must be taken with fixings and weatherproofing (eg by the inclusion of cavity trays with weepholes).

9.1.11 Calculations of the thermal transmittance (U value) of a wall must be carried out in accordance with BS EN ISO 6946 : 2017 and BRE Report BR 443 : 2019.

9.1.12 Care must be taken in the overall design and construction of junctions with other elements and openings to minimise thermal bridges and air infiltration. Detailed guidance can be found in the documents supporting the national Building Regulations.

Interstitial condensation

9.1.13 An assessment of the risk of interstitial condensation for the specific construction must be carried out in accordance with BS EN ISO 13788 : 2012 using the declared water vapour resistance factors in Table 4.

9.1.14 To limit the risk of interstitial condensation, walls must be designed and constructed in accordance with BS 5250 : 2021, and the relevant guidance.

9.1.15 Adequate ventilation must be provided, particularly in rooms expected to experience high humidity, and to ensure the integrity of air and vapour control layers (AVCLs) and linings against vapour ingress.

9.1.16 An AVCL must be situated behind the internal plasterboard lining, which must be a minimum thickness of 0.125 mm (500 gauge) polyethylene, or plasterboard backed with a vapour control membrane.

Surface condensation

9.1.17 In England and Wales, walls will adequately limit the risk of surface condensation when the thermal transmittance (U value) does not exceed $0.7 \text{ W}\cdot\text{m}^{-2}\cdot\text{K}^{-1}$ at any point and the junctions with other elements are designed in accordance with section 9.1.10 of this Certificate.

9.1.18 In Scotland, walls constructions will be acceptable when the thermal transmittance (U value) does not exceed $1.2 \text{ W}\cdot\text{m}^{-2}\cdot\text{K}^{-1}$ at any point, and the junctions with other elements are designed in accordance with the guidance referred to in BS 5250 : 2021. Further guidance may be obtained from BRE Report BR 262 : 2002.

9.2 Installation

9.2.1 Installation instructions provided by the Certificate holder were assessed and judged to be appropriate and adequate.

9.2.2 Installation must be carried out in accordance with this Certificate and the Certificate holder's instructions. A summary of instructions and guidance is provided in Annex A.

9.2.3 In all situations, it is particularly important to ensure during installation that:

- cavity wall ties are installed correctly and are thoroughly clean and slope down
- excess mortar is cleaned from the cavity face of the brick leaf and any debris removed from the cavity
- mortar droppings are cleaned from the exposed edges of installed slabs
- insulation slabs are properly installed, and butt jointed
- installation is carried out to the highest level on each wall, or the top edge of the insulation is protected by a cavity tray
- at the lintel level, a cavity tray, stop ends and weep holes are provided
- cavity battens and/or boards are used during construction to prevent bridging by mortar droppings
- DPC membranes at ground level do not project into the cavity (as they can form a trap for mortar bridging)
- raked or recessed mortar joints are avoided in very severe exposure areas.

9.2.4 The slab can be cut using a fine-toothed saw or sharp knife, but care must be taken to prevent damage, particularly to edges.

9.2.5 Cavity barriers must be provided at the junction of the external wall and roof space.

9.2.6 It is important to ensure a tight fit between slabs. Trimming must be accurate, to achieve close-butt joints and continuity of insulation.

9.2.7 The product must be applied with the black glass tissue facing outwards (that is, into the ventilated cavity).

9.2.8 Slabs must be close-butt at all vertical and horizontal joints. The horizontal joints of the insulation should be staggered in accordance with good practice.

9.2.9 The product must be cut and tightly fitted around wall brackets where these occur.

9.2.10 The insulation must be installed to coincide with the steel/timber frame, with retaining discs used in conjunction with the wall ties at no more than 600 mm horizontally and 450 mm vertically.

9.2.11 When using double layer configurations, joints between layers must be staggered by ≥ 100 mm. The inner layer should be fixed in the vertical orientation, with the outer layer fixed in the horizontal orientation.

9.3 Workmanship

Practicability of installation was assessed by the BBA on the basis of the Certificate holder's information. To achieve the performance described in this Certificate, the product must only be installed by a competent general builder, or a contractor, experienced with this type of product.

9.4 Maintenance and repair

As the product is confined between the wall and the outer leaf, and has suitable durability, and provided the integrity of the cladding is maintained throughout the life of the product, maintenance is not required.

10 Manufacture

10.1 The production processes for the product have been assessed, and provide assurance that the quality controls are satisfactory according to the following factors:

10.1.1 The manufacturer has provided documented information on the materials, processes, testing and control factors.

10.1.2 The quality control operated over batches of incoming materials has been assessed and deemed appropriate and adequate.

10.1.3 The quality control procedures and product testing to be undertaken have been assessed and deemed appropriate and adequate.

10.1.4 The process for management of non-conformities has been assessed and deemed appropriate and adequate.

10.1.5 An audit of each production location was undertaken, and it was confirmed that the production process was in accordance with the documented process, and that equipment has been properly tested and calibrated.

† 10.2 The BBA has undertaken to review the above measures on a regular basis through a surveillance process, to verify that the specifications and quality control operated by the manufacturer are being maintained.

11 Delivery and site handling

11.1 The Certificate holder stated that the product is delivered to the site compression-wrapped in polythene. Each pack carries a label bearing the Certificate holder's name, product description and the BBA logo incorporating the number of this Certificate.

11.2 Delivery and site handling must be performed in accordance with the Certificate holder's instructions and this Certificate, including:

11.2.1 Slabs must be stored clear of the ground, on a clean, level surface, and preferably under cover to protect them from prolonged exposure to moisture or mechanical damage.

11.2.2 Dust masks, gloves and long-sleeved clothing must be worn when cutting and handling the slab.

11.2.3 Damaged, contaminated or wet slabs must not be used.

Supporting information in this Annex is relevant to the product but has not formed part of the material assessed for the Certificate.

Construction (Design and Management) Regulations 2015

Construction (Design and Management) Regulations (Northern Ireland) 2016

Information in this Certificate may assist the client, designer (including Principal Designer) and contractor (including Principal Contractor) to address their obligations under these Regulations.

CE marking

The Certificate holder has taken the responsibility of CE marking the product in accordance with harmonised European Standard EN 13162 : 2012.

Management Systems Certification for production

The management systems of the manufacturer have been assessed and registered as meeting the requirements of BS EN ISO 9001 : 2015 and BS EN ISO 14001 : 2015 by SGS (Certificates PL 18/0695 and PL 18/0696 respectively).

Additional information on installation

Installation must be in accordance with the Certificate holder's instructions and this Certificate. A summary of the procedure is provided below:

Procedure

A.1 For a typical installation, a breathable membrane is placed between the sheathing board and the product. An AVCL is placed between the plasterboard and the frame (see Figures 1 and 2).

A.2 After each section of the leading leaf is built, excess mortar should be removed from the cavity face, and mortar droppings cleaned from exposed edges of the installed board before installation of the next run of boards. Use of a cavity board or a cavity batten will protect the installed board edges and help to keep the cavity clean as the following leaf is built.

A.3 Example installations are given in Figures 1 and 2.

Figure 1 Lightweight steel frame

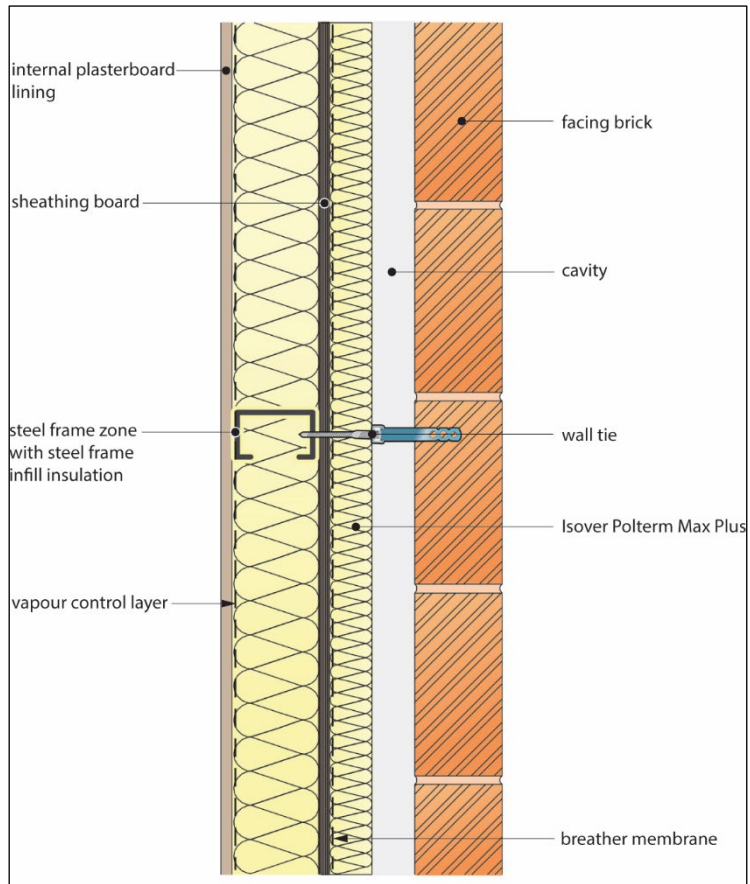
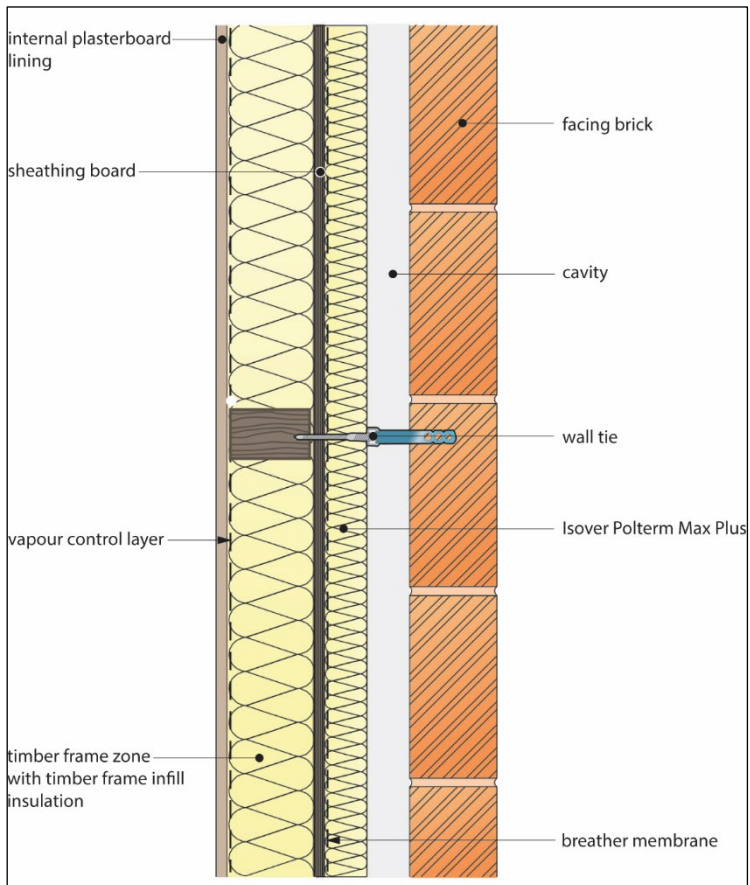


Figure 2 Timber frame application



Double layering

A.4 The Certificate holder's guidance should be sought on detailed installation methods for specific projects; however such advice is outside the scope of this Certificate.

Bibliography

- BRE Report BR 262 : 2002 *Thermal insulation : avoiding risk*
- BRE Report BR 443 : 2019 *Conventions for U-value calculations*
- BS 5250 : 2021 *Code of practice for control of condensation in buildings*
- BS 5618 : 1985 *Code of practice for thermal insulation of cavity walls (with masonry or concrete inner and outer leaves) by filling with urea-formaldehyde (UF) foam systems*
- BS 8000-3 : 2020 *Workmanship on building sites — Masonry — Code of practice*
- BS EN 845-1 : 2013 + A1 : 2016 *Specification for ancillary components for masonry — Wall ties, tension straps, hangers and brackets*
- BS EN 1604 : 1996 *Thermal insulating products for building applications — Determination of dimensional stability under specified temperature and humidity conditions*
- BS EN 1609 : 2013 *Thermal insulating products for building applications — Determination of short term water absorption by partial immersion*
- BS EN 1993-1-2 : 2005 *Eurocode 3 — Design of steel structures — General rules — Structural fire design*
NA to BS EN 1993-1-2 : 2005 UK National Annex to *Eurocode 3 — Design of steel structures — General rules — Structural fire design*
- BS EN 1996-1-1 : 2005 + A1 : 2012 *Eurocode 6: Design of masonry structures — General rules for reinforced and unreinforced masonry structures*
NA to BS EN 1996-1-1 : 2005 + A1 : 2012 UK National Annex to *Eurocode 6 — Design of masonry structures — General rules for reinforced and unreinforced masonry structures*
- BS EN 1996-1-2 : 2005 *Eurocode 6 — Design of masonry structures — General rules — Structural fire design*
NA to BS EN 1996-1-2 : 2005 UK National Annex to *Eurocode 6 — Design of masonry structures — General rules — Structural fire design*
- BS EN 1996-2 : 2006 *Eurocode 6: Design of masonry structures — Design considerations, selection of materials and execution of masonry*
NA to BS EN 1996-2 : 2006 UK National Annex to *Eurocode 6 — Design of masonry structures — Design considerations, selection of materials and execution of masonry*
- BS EN 1996-3 : 2006 *Eurocode 6 — Design of masonry structures — Simplified calculation methods for unreinforced masonry structures*
NA + A1 : 2014 to BS EN 1996-3 : 2006 UK National Annex to *Eurocode 6 — Design of masonry structures — Simplified calculation methods for unreinforced masonry structures*
- BS EN 12086 : 2013 *Thermal insulating products for building applications — Determination of water vapour transmission properties*
- BS EN 12667 : 2001 *Thermal performance of building materials and products — Determination of thermal resistance by means of guarded hot plate and heat flow meter methods — Products of high and medium thermal resistance.*
- BS EN 13162 : 2012 + A1 : 2015 *Thermal insulation products for buildings — Factory made mineral wool (MW) products — Specification*
- BS EN 13501-1 : 2007 + A1 : 2009 *Fire classification of construction products and building elements — Classification using test data from reaction to fire tests*
- BS EN 13914-1 : 2016 *Design, preparation and application of external rendering and internal plastering — External rendering*
- BS EN ISO 6946 : 2017 *Building components and building elements — Thermal resistance and thermal transmittance — Calculation method*
- BS EN ISO 9001 : 2015 *Quality management systems — Requirements*

BS EN ISO 10456 : 2007 *Building materials and products — Hygrothermal properties — Tabulated design values and procedures for determining declared and design thermal values*

BS EN ISO 13788 : 2012 *Hygrothermal performance of building components and building elements — Internal surface temperature to avoid critical surface humidity and interstitial condensation — Calculation methods*

BS EN ISO 14001 : 2015 *Environmental management systems — Requirements with guidance for use*

Conditions of Certificate

Conditions

1 This Certificate:

- relates only to the product that is named and described on the front page
- is issued only to the company, firm, organisation or person named on the front page – no other company, firm, organisation or person may hold or claim that this Certificate has been issued to them
- has to be read, considered and used as a whole document – it may be misleading and will be incomplete to be selective
- is copyright of the BBA
- and any matter arising out of or in connection with it or its subject matter (including non-contractual disputes or claims) is governed by and construed in accordance with the law of England and Wales.
- the courts of England and Wales shall have exclusive jurisdiction to settle any matter arising out of or in connection with this Certificate or its subject matter (including non-contractual disputes or claims).

2 Publications, documents, specifications, legislation, regulations, standards and the like referenced in this Certificate are those that were current and/or deemed relevant by the BBA at the date of issue or reissue of this Certificate.

3 This Certificate will be displayed on the BBA website, and the Certificate Holder is entitled to use the Certificate and Certificate logo, provided that the product and its manufacture and/or fabrication, including all related and relevant parts and processes thereof:

- are maintained at or above the levels which have been assessed and found to be satisfactory by the BBA
- continue to be checked as and when deemed appropriate by the BBA under arrangements that it will determine
- are reviewed by the BBA as and when it considers appropriate.

4 The BBA has used due skill, care and diligence in preparing this Certificate, but no warranty is provided.

5 In issuing this Certificate the BBA is not responsible and is excluded from any liability to any company, firm, organisation or person, for any matters arising directly or indirectly from:

- the presence or absence of any patent, intellectual property or similar rights subsisting in the product or any other product
- the right of the Certificate holder to manufacture, supply, install, maintain or market the product
- actual installations of the product, including their nature, design, methods, performance, workmanship and maintenance
- any works and constructions in which the product is installed, including their nature, design, methods, performance, workmanship and maintenance
- any loss or damage, including personal injury, howsoever caused by the product, including its manufacture, supply, installation, use, maintenance and removal
- any claims by the manufacturer relating to UKCA marking and CE marking.

6 Any information relating to the manufacture, supply, installation, use, maintenance and removal of this product which is contained or referred to in this Certificate is the minimum required to be met when the product is manufactured, supplied, installed, used, maintained and removed. It does not purport in any way to restate the requirements of the Health and Safety at Work etc. Act 1974, or of any other statutory, common law or other duty which may exist at the date of issue or reissue of this Certificate; nor is conformity with such information to be taken as satisfying the requirements of the 1974 Act or of any statutory, common law or other duty of care.

British Board of Agrément

1st Floor, Building 3, Hatters Lane
Croxley Park, Watford
Herts WD18 8YG

©2025

tel: 01923 665300
clientservices@bbacerts.co.uk
www.bbacerts.co.uk